



New England River Rafting Adventure

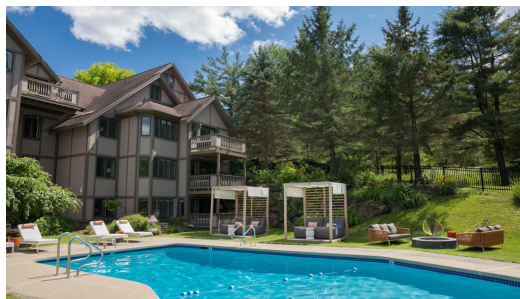
Vermont River Float and Micro Tour Tastings with a 2 Night Stay at Field Guide Lodge for (2)



Two
Guests



2 Night
Stay



Package Details

Ski, bike, hike, shop, or just enjoy the beautiful Green Mountain scenery while staying at this Stowe, Vermont hotel. Field Guide Lodge is an unexpected and delightful starting point for exploring Stowe in any season. Centrally located in the heart of downtown Stowe and a short drive from Mount Mansfield.

Tour local craft breweries in the Stowe region of Vermont. With door to door transportation you will have an unforgettable beer journey with no worries. You will visit a number of breweries and sample at least 15 different craft beers along with excellent guidance from our tour guide. Enjoy a self guided river float. This gentle and slow-moving river is perfect for beginner paddlers. As you float slowly through Vermont farmland you'll be awed by the views of Camel's Hump Mountain. You may see otters, deer or even an occasional moose as they come to drink from the river. Paddle a solo kayak, tandem kayak, canoe or standup paddleboard. The package is intended for use from June through September. We can sometimes provide alternate tours if a request is outside of the season and accommodations are available to us.

Experience Includes

- 2 Night Queen or King Bed Stay at Field Guide Lodge for (2)
- Self Guided Vermont River Float for (2)
- Taste Local Craft Beers on the Vermont Micro Tour for (2)

Terms & Conditions

Vermont River Adventure

Your package Redemption Certificate will be emailed to initiate the booking process. Please allow 15 business days after your event to receive your certificate. Reservations must be booked 60 days before travel, and property inventory is subject to availability. Reservations must be booked within 12 months, and travel must be completed within 24 months of notification. Once confirmed, all reservations are final. Packages may not be transferred or resold. All certificates should be handled with care as they are the same as cash and nonrefundable. River activity available Memorial Day to Labor Day only.